



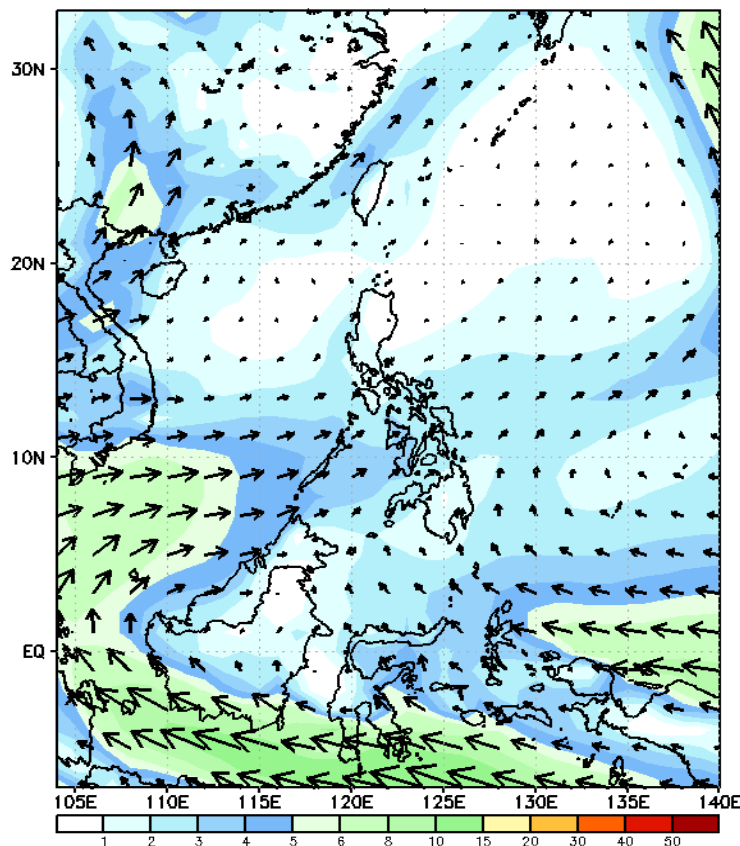
Week 1 & Week 2 Forecast for the Philippines using GEFS Model



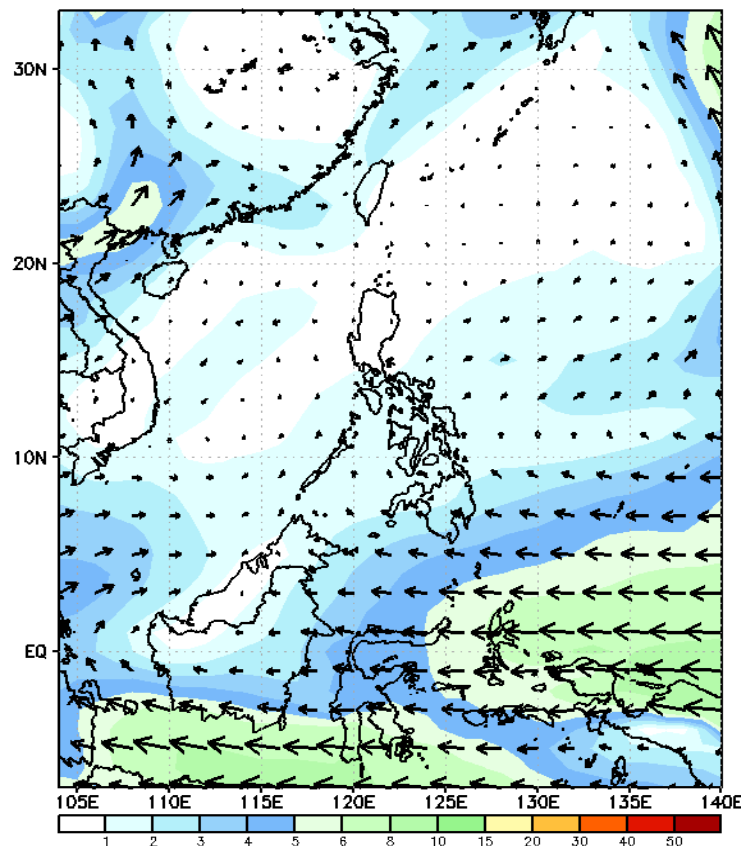
GEFS Week-1 Wind Forecasts:

Week 1: Aug 23-29, 2024

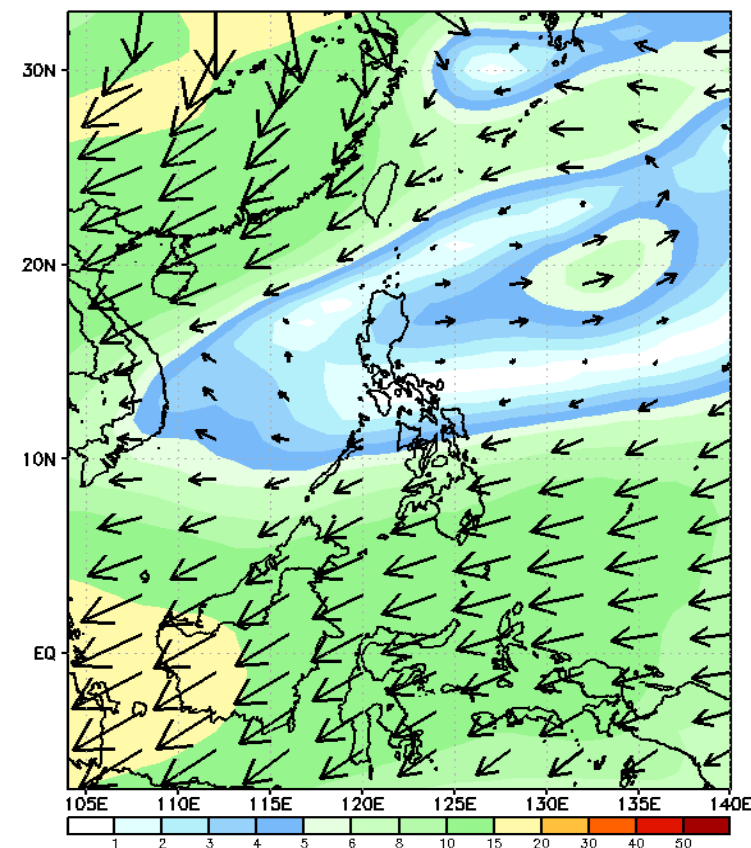
GEFS Week-1 850-hPa Wind Total
Valid: 20240823 - 20240829



GEFS Week-1 700-hPa Wind Total
Valid: 20240823 - 20240829

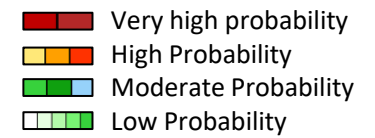


GEFS Week-1 200-hPa Wind Total
Valid: 20240823 - 20240829



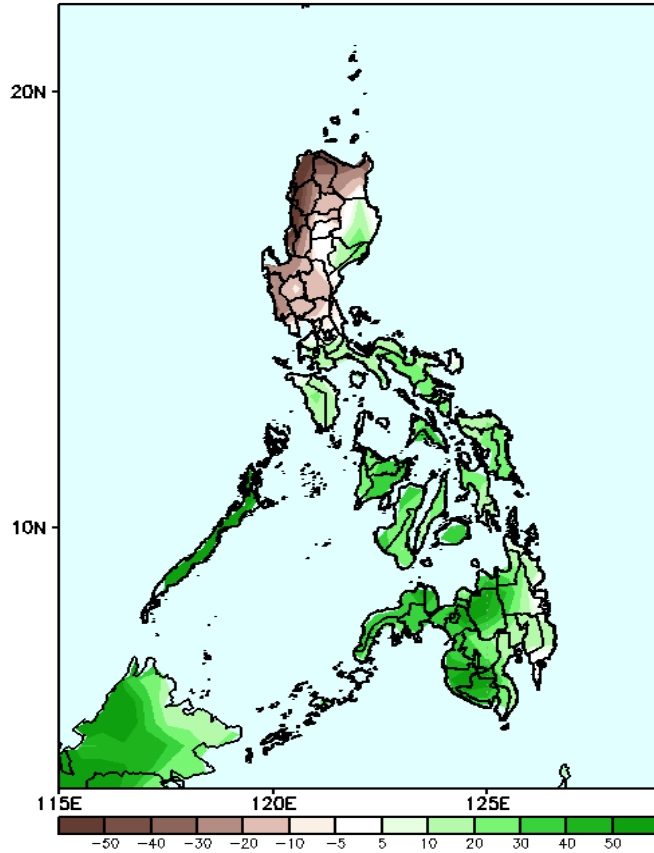
Southwest Monsoon affecting the western sections of Central and Southern Luzon and Visayas. Easterlies affecting the rest of the country.

Precipitation Anomaly and Exceedance Probability > 25/50 mm



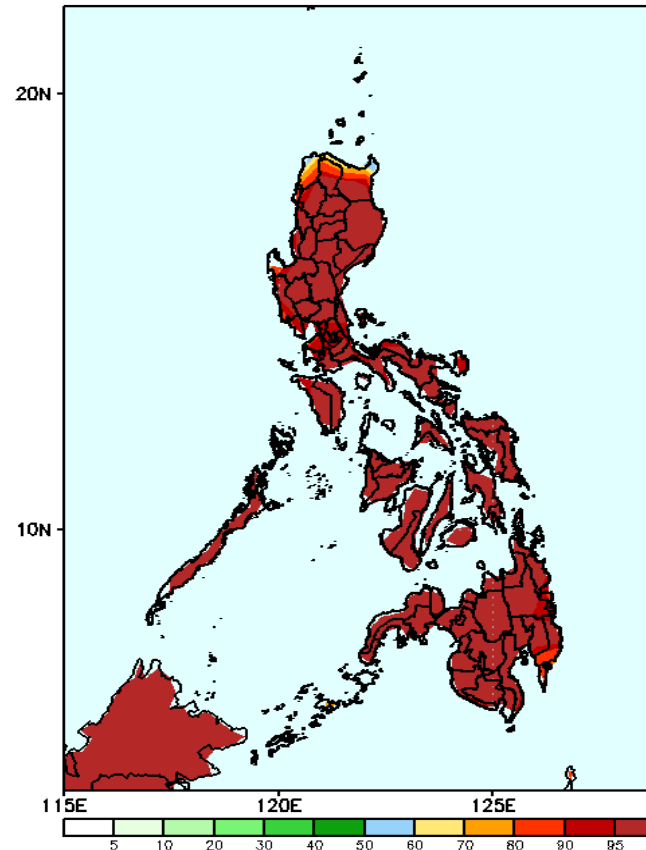
Week 1: Aug 23-29, 2024

GEFS Week-1 Precip Anomaly
Valid: 20240823 - 20240829



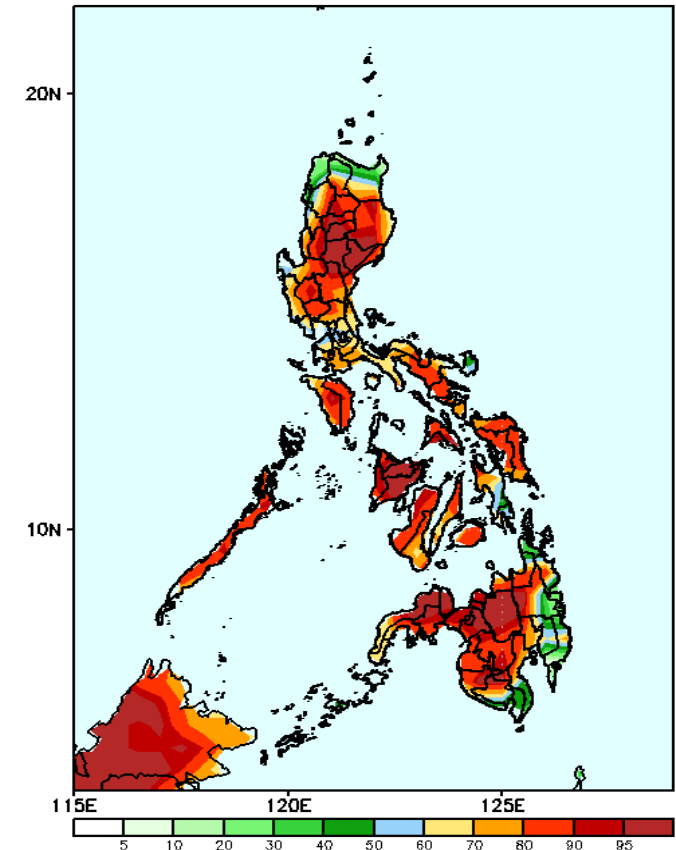
Rainfall deficit of 20-60mm in most parts of Northern and Central Luzon while 20-60mm increase in rainfall is expected in Isabela, Quirino and the rest of the country.

GEFS Week-1 Exceedance Prob. > 25mm
Valid: 20240823 - 20240829



Probability to Exceed 25mm
 • High to very high across the country.

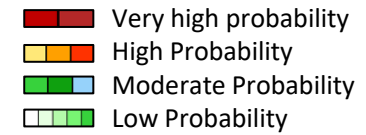
GEFS Week-1 Exceedance Prob. > 50mm
Valid: 20240823 - 20240829



Probability to Exceed 50mm

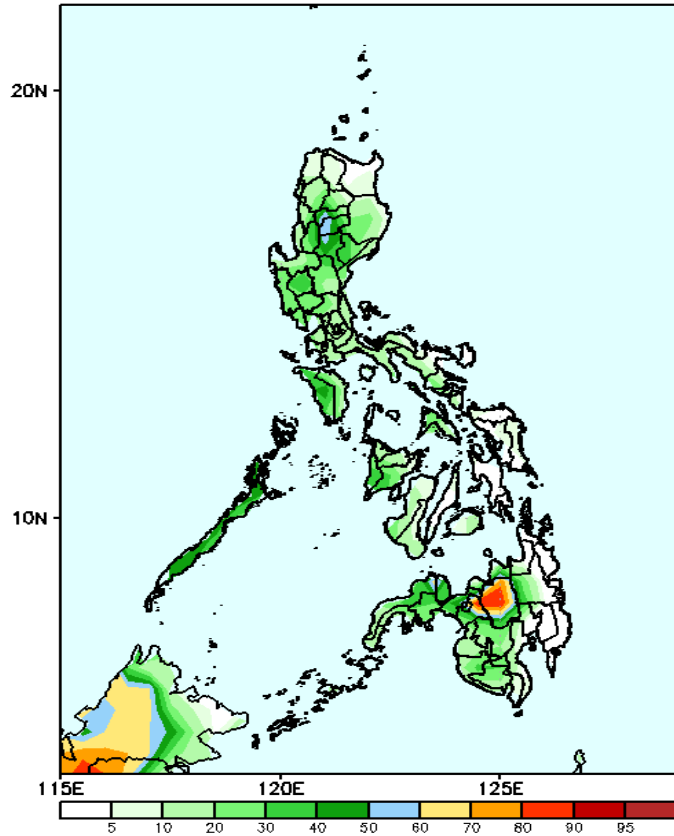
- High to very high over most parts of Luzon, Visayas, and Western and Central Mindanao;
- Moderate to high over the Northernmost part of Luzon, Catanduanes, Southern Leyte, and the rest of Mindanao.

Exceedance Probability > 100/150/200 mm



Week 1: Aug 23-29, 2024

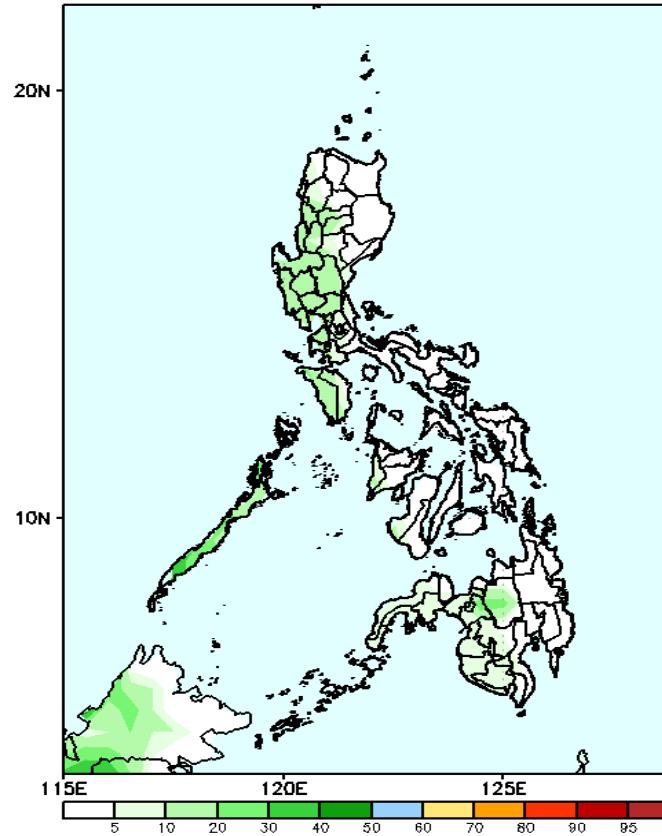
GEFS Week-1 Exceedance Prob. > 100mm
Valid: 20240823 - 20240829



Probability to Exceed 100mm

- Moderate to high over Bukidnon;
- Low to moderate over CAR, Palawan and the rest of Northern Mindanao;
- Low over the rest of the country.

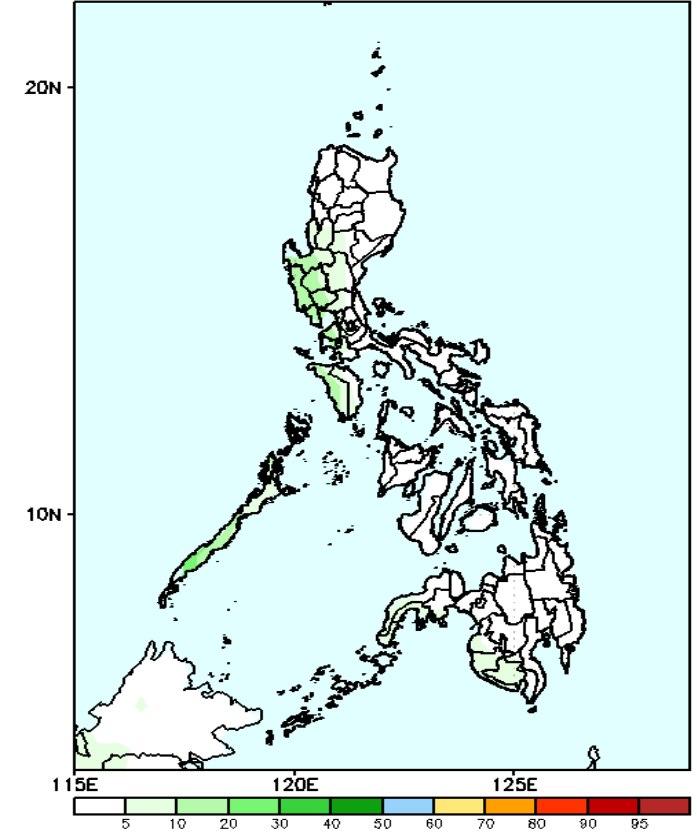
GEFS Week-1 Exceedance Prob. > 150mm
Valid: 20240823 - 20240829



Probability to Exceed 150mm

- Low across the country.

GEFS Week-1 Exceedance Prob. > 200mm
Valid: 20240823 - 20240829



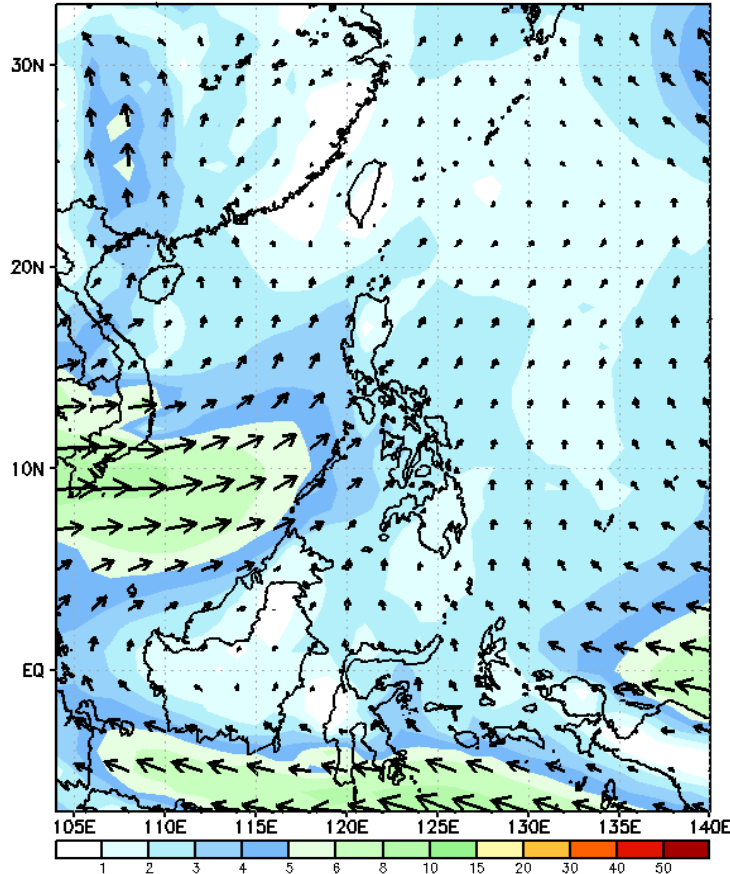
Probability to Exceed 200mm

- Low across the country.

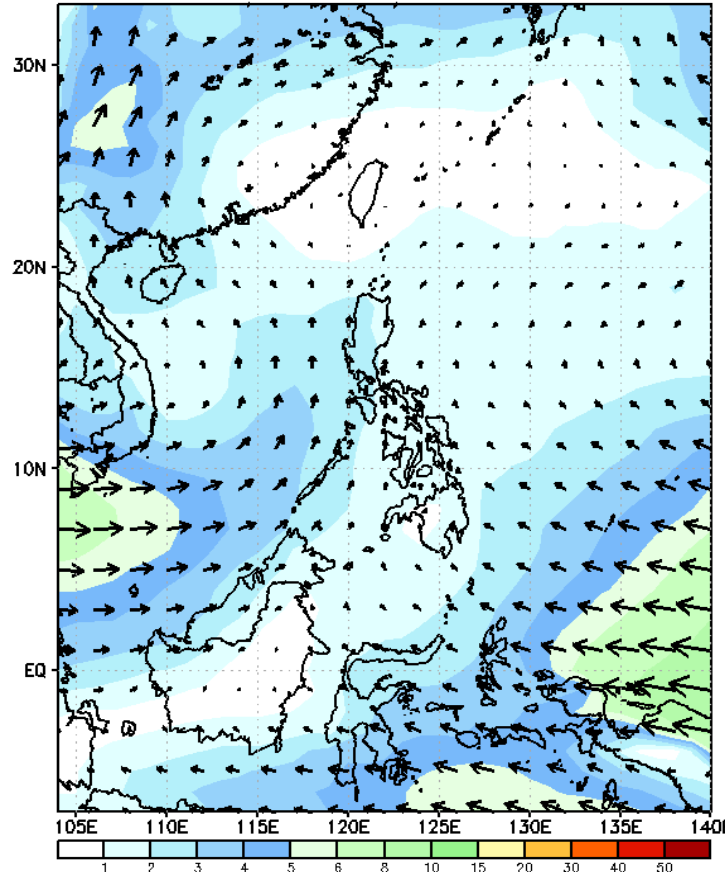
GEFS Week-2 Wind Forecasts:

Week 2: Aug 30- Sep 05, 2024

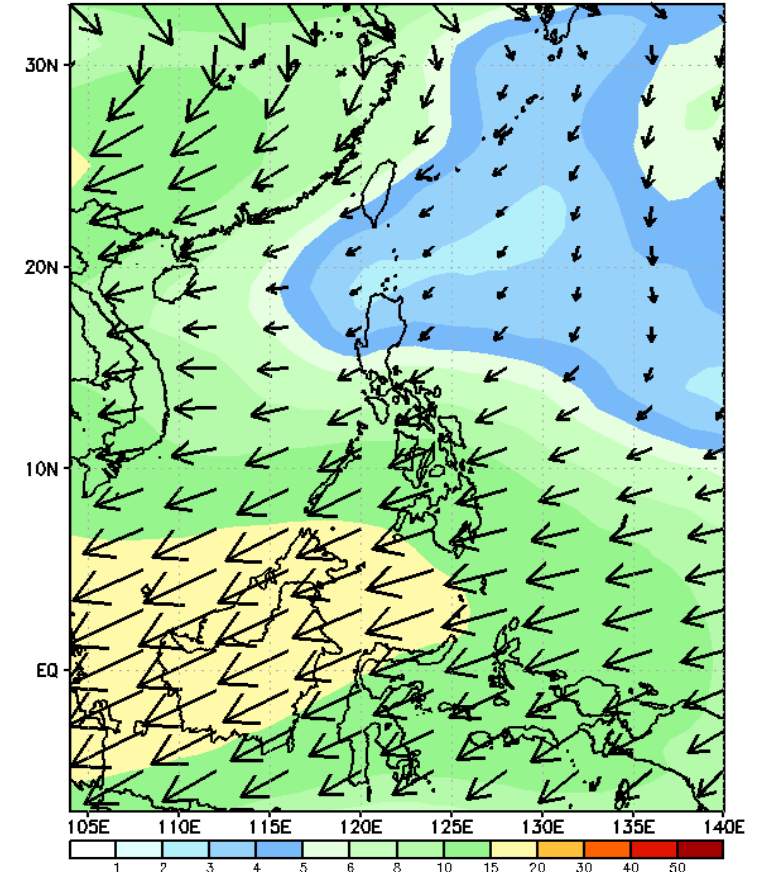
GEFS Week-2 850-hPa Wind Total
Valid: 20240830 - 20240905



GEFS Week-2 700-hPa Wind Total
Valid: 20240830 - 20240905

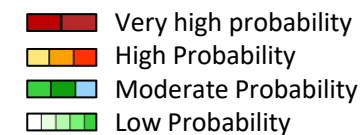


GEFS Week-2 200-hPa Wind Total
Valid: 20240830 - 20240905



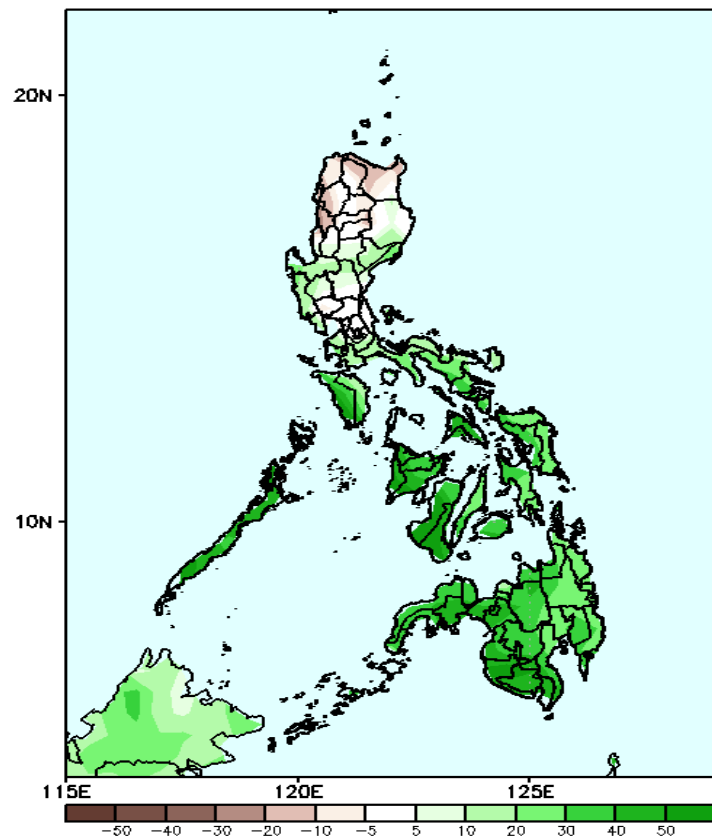
Southwest Monsoon affecting the western section of Luzon and Visayas. Easterlies affecting the rest of the country.

Precipitation Anomaly and Exceedance Probability > 25/50 mm



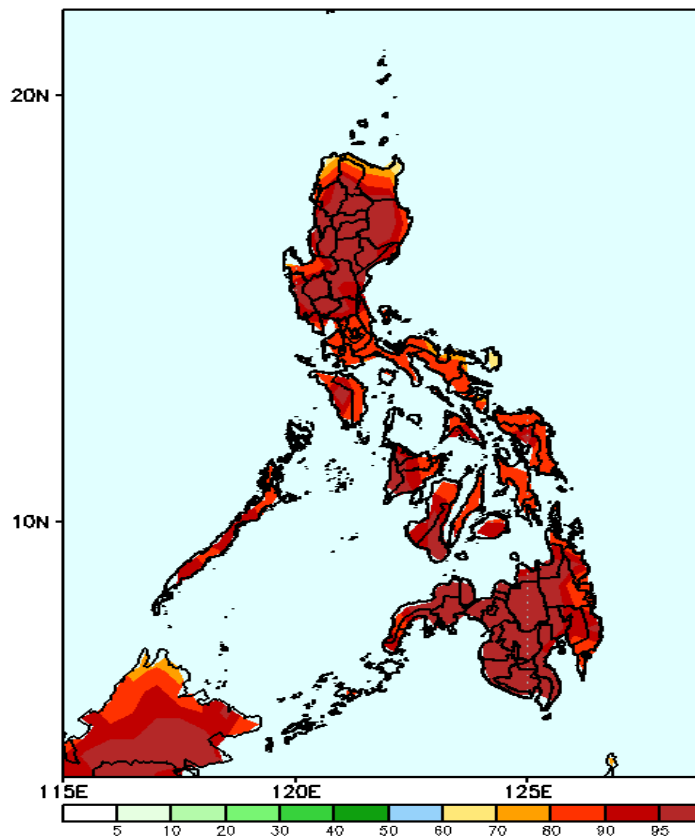
Week 2: Aug 30- Sep 05, 2024

GEFS Week-2 Precip Anomaly
Valid: 20240830 - 20240905



Rainfall deficit of 10-20mm in most parts of Northern Luzon while 20-60mm increase in rainfall is expected in for the rest of the country.

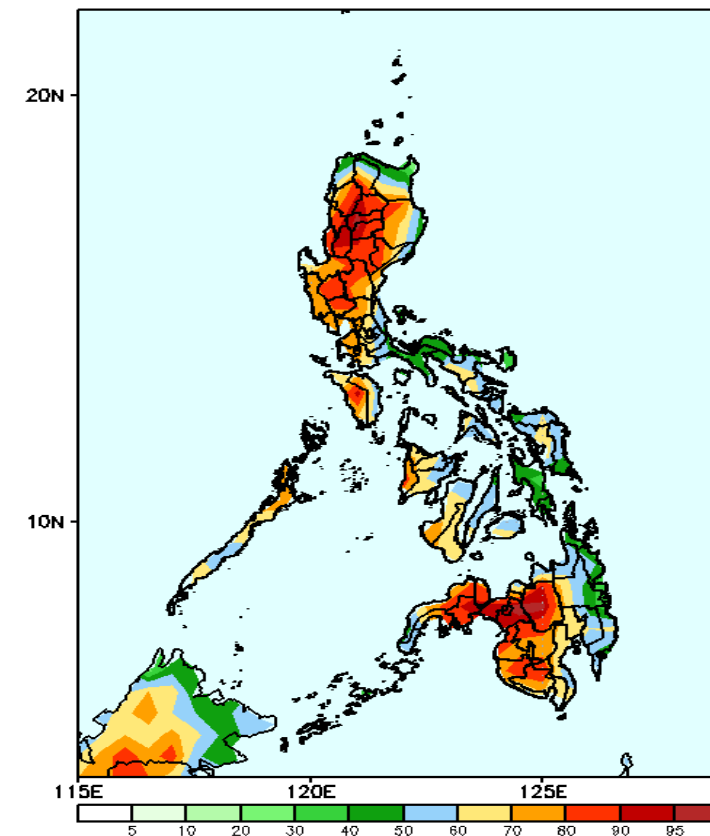
GEFS Week-2 Exceedance Prob. > 25mm
Valid: 20240830 - 20240905



Probability to Exceed 25mm

- High to very high across the country.

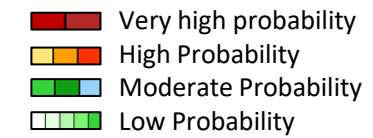
GEFS Week-2 Exceedance Prob. > 50mm
Valid: 20240830 - 20240905



Probability to Exceed 50mm

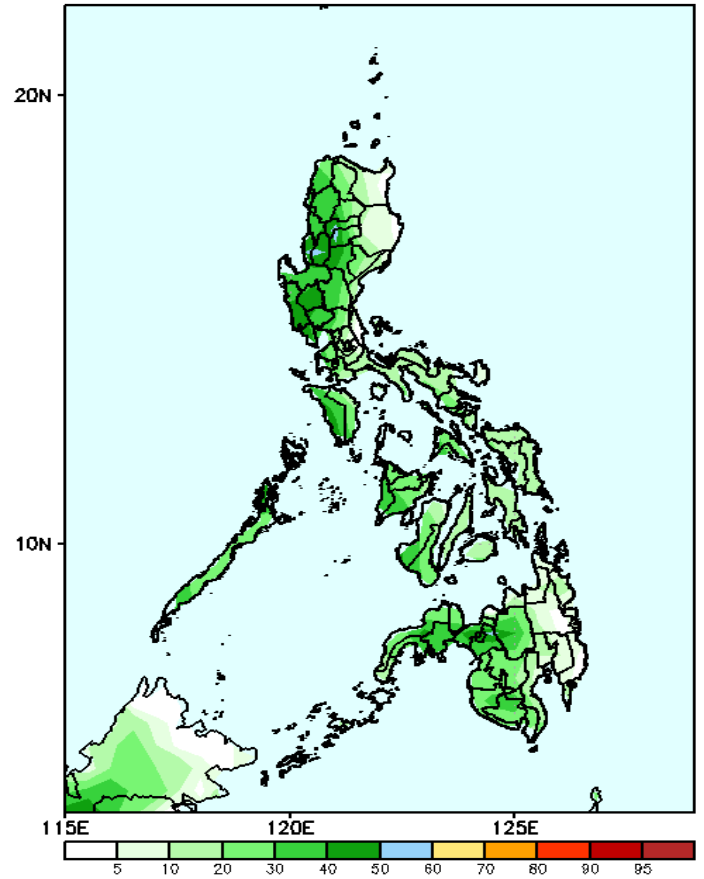
- High to very high over most parts of CAR, Bukidnon, and Lanao provinces;
- Moderate to high over the rest of the country.

Exceedance Probability > 100/150/200 mm



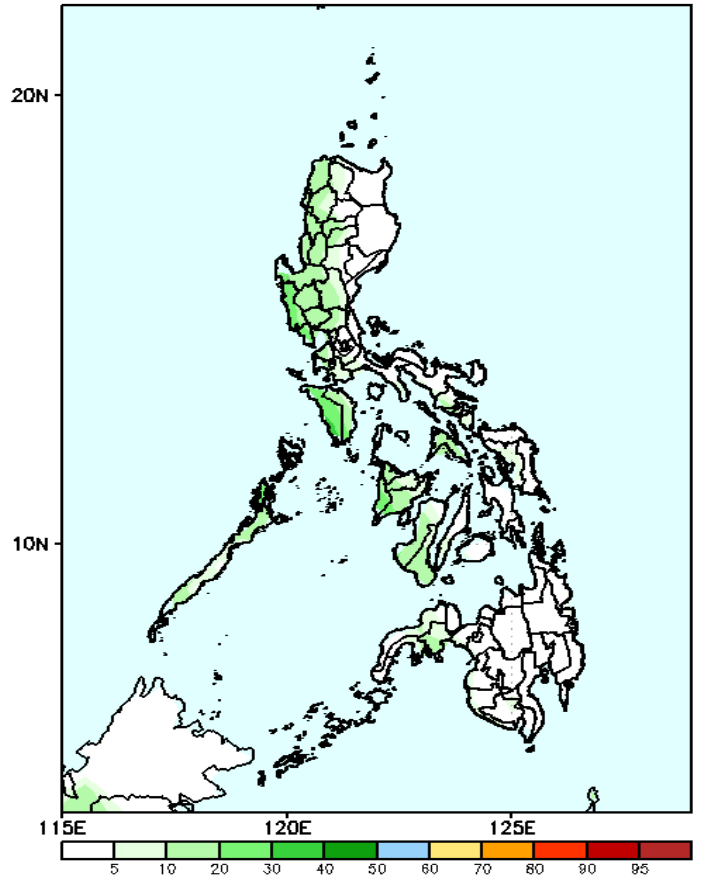
Week 2: Aug 30- Sep 05, 2024

GEFS Week-2 Exceedance Prob. > 100mm
Valid: 20240830 - 20240905



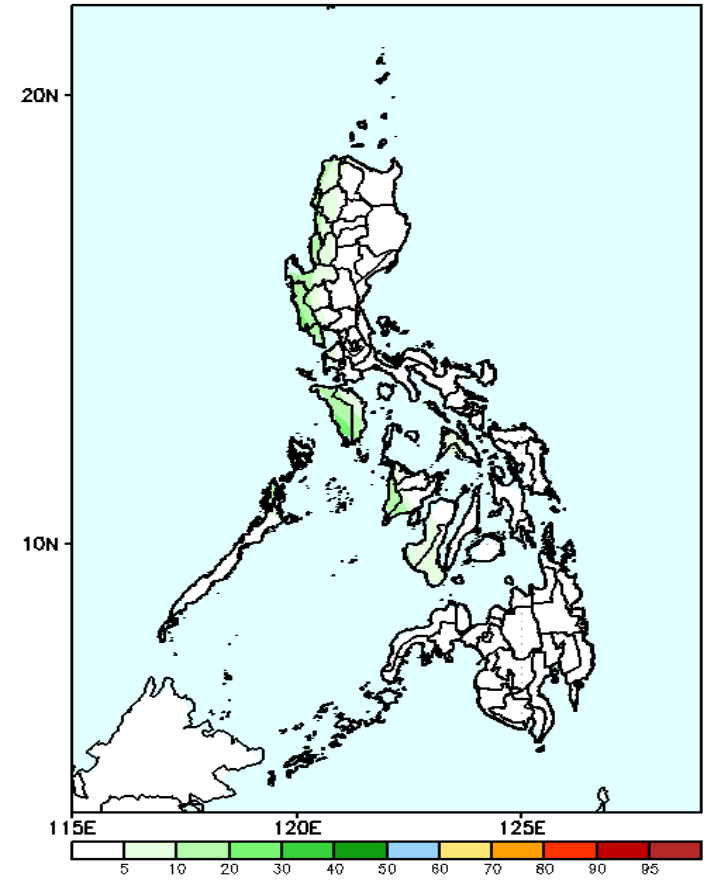
- Probability to Exceed 100mm**
- Low to moderate over western sections of the country and Bukidnon;
 - Low over the rest of the country.

GEFS Week-2 Exceedance Prob. > 150mm
Valid: 20240830 - 20240905



- Probability to Exceed 150mm**
- Low probability across the country.

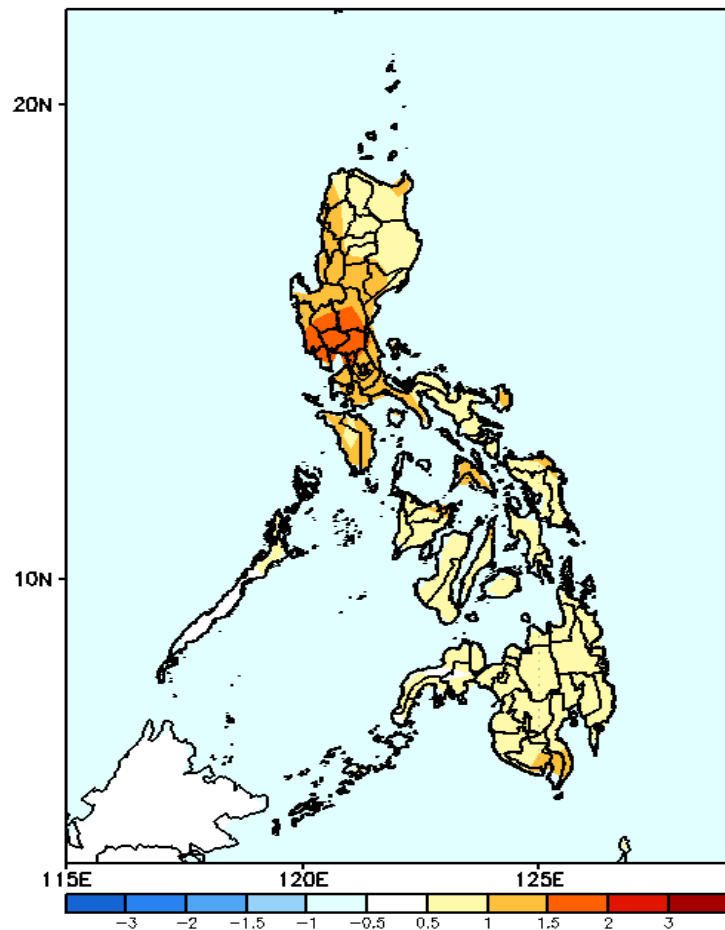
GEFS Week-2 Exceedance Prob. > 200mm
Valid: 20240830 - 20240905



- Probability to Exceed 200mm**
- Low probability across the country.

GEFS Week-1 & 2 Forecasts: T2m Anomaly

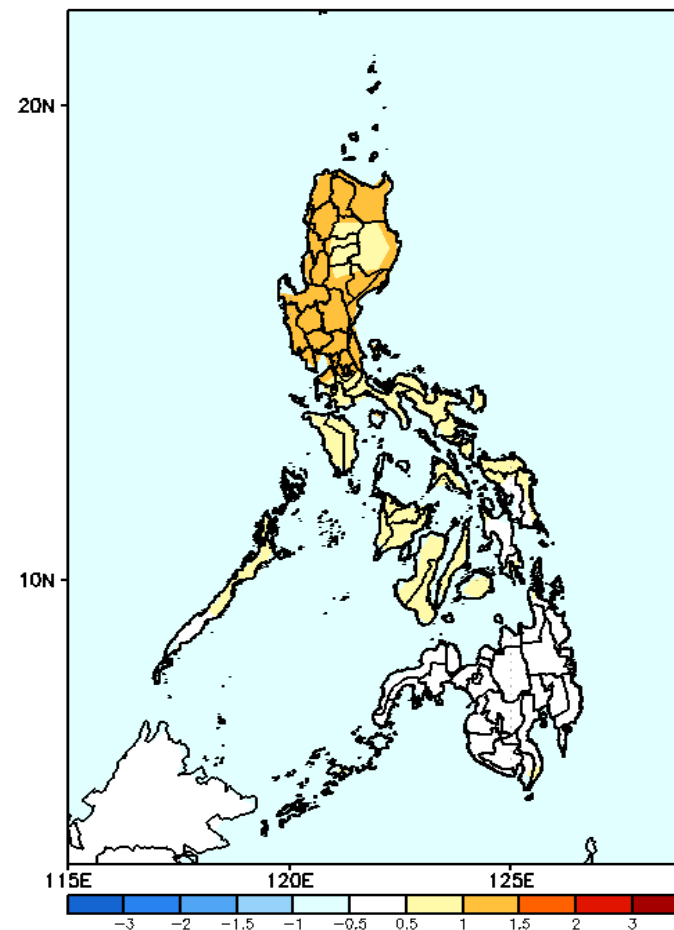
GEFS Week-1 T2m Anomaly
Valid: 20240823 - 20240829



2m Temperature Week 1: Aug 23-29, 2024

Near to warmer surface air temperature will likely be experienced in most parts of the country.

GEFS Week-2 T2m Anomaly
Valid: 20240830 - 20240905



2m Temperature Week 2: Aug 30- Sep 05, 2024

Near to slightly warmer surface air temperature will likely be experienced in most parts of Luzon and Visayas while near average surface air temperature is expected in Mindanao.